

## Top Ten Reasons to implement Infor EAM Solution for your Organization

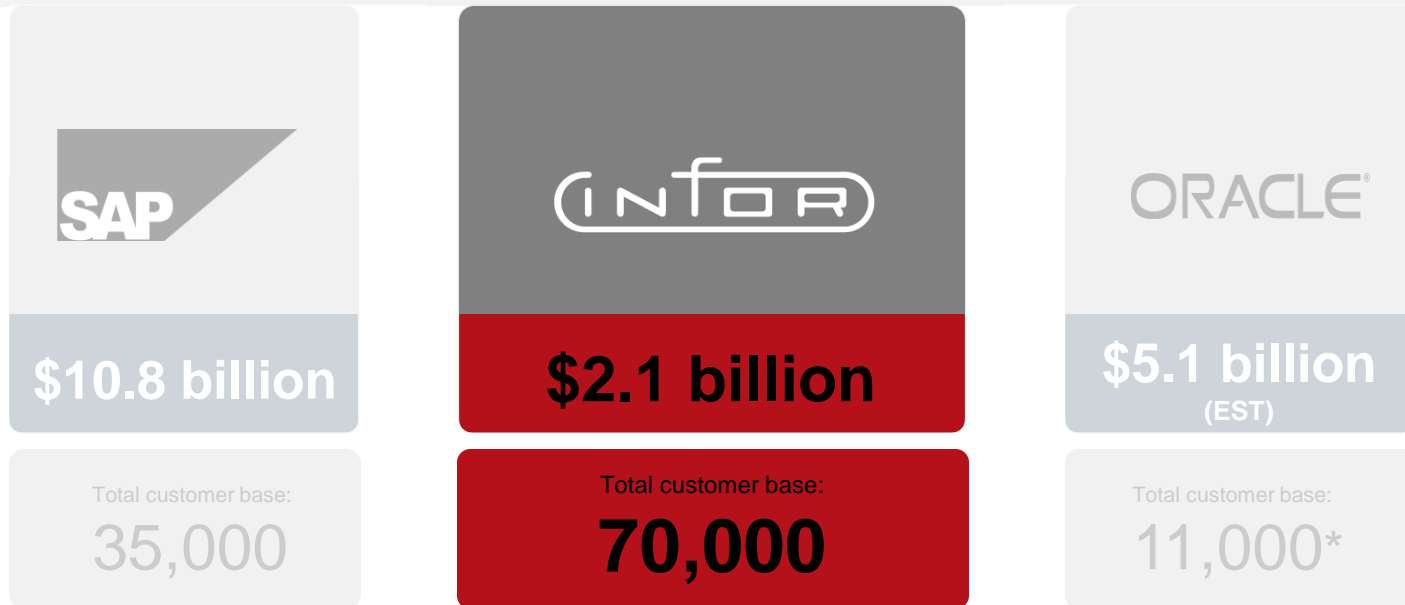


# Agenda

- Introductions
- Review of Top 10 Reasons
- Infor EAM Business Edition Demonstration
- Summary
- Q&A

# Infor's Commitment

Infor is the mid-market leader...



**More customers than two largest competitors combined**

\* Enterprise Application Customers

# Reason #1 – Proven Record of Success



# Reason #2 – Advanced Technology

## ■ Advanced asset management tool

- Enterprise / Multi-site
- Web-architected
- Zero-footprint
- Session timeout
- Time zone server off set
- Available in SQL or Oracle
- Hosting
- Email notifications



## Reason #3 – Data Migration

- Static Data is migrated into Infor EAM tables
  - Equipment
  - Employees
  - Inventory
  - Preventive Maintenance Schedules
  - Suppliers
  - Manufacturers
  - Locations
  - Problem and Failure Codes
  - Spare Parts Lists
  - Users

**Legacy Apps**



**Infor** EAM Business Edition

# Reason #4 – Same Goals - More Capabilities

## Goals

- Improve Asset Performance
  - Reduce downtime
  - Schedule PM's
- Regulatory Compliance
  - Track equipment history
- Work Order Management
  - Schedule work by trade and employee
- Reduce Operating Cost
  - Inventory control
  - Streamlined purchasing
  - Energy consumption

## Enhanced Functionality

- ⇒ Assets
  - ⇒ Track status and cost of assets
  - ⇒ Manage Warranty claims
  - ⇒ Calculate depreciation
- ⇒ Benchmark – dashboard / KPIs
- ⇒ Work Orders
  - ⇒ Create Pick Lists
  - ⇒ Track Tool Usage costs
  - ⇒ Assign Multiple Activities per WO
- ⇒ Purchasing
  - ⇒ Add PO Clauses
  - ⇒ Track Serialized Inventory
  - ⇒ Integrate with financial systems

“Its functionality and technology remain as robust as ever.”

Kristian Steenstrup, Gartner

# Reason #5 – Ease of Use

- Personalized Home Page
  - Inbox
  - KPIs
  - Hyperlinked
- Screen Designer
  - Design screens specific to user groups
  - Relabel and drag-and-drop fields
  - User-defined Hyperlinks for fast data entry
- Find Data
  - Easier/configurable menu structure
  - Dataspy / Saved Filters
  - Sorts
  - Field Selections



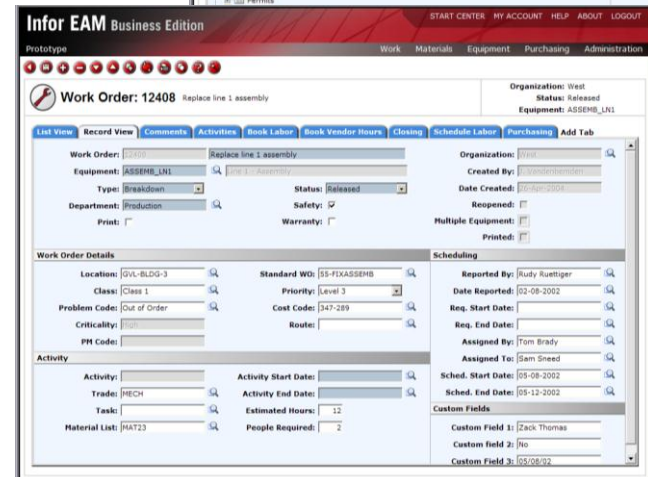
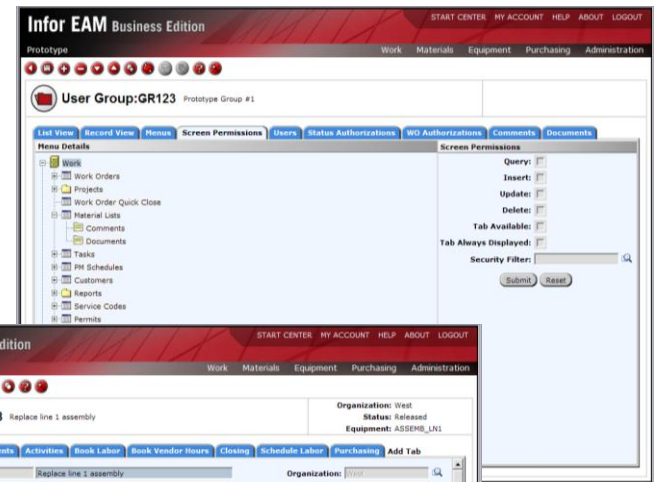
START CENTER MY ACCOUNT HELP ABOUT LOGOUT

Work Materials Equipment Purchasing Administration



# Reason #6 – Configurability

- Status labels and changes
  - Status on Work Order, Requisition, and PO are customer-created
  - Status change authorizations restricted per user
- Screen Designer
  - Design screens specific to user groups
  - Re-label and drag-and-drop fields
  - User-defined Hyperlinks for fast data entry
- Unlimited custom fields
  - Unlimited
  - Display on record view
- Documents
  - Stored in the Db
- Work Order authorizations



## Reason #7 – Easy Setup

- KPI's
  - These benchmarking tools are based on “business best practices”
- Inbox items
  - Standard notification items are pre-written
- Security roles
  - Basic roles are created for convenience
- Reports
  - 63 “Best Practices” reports
- ERP integration



# Reason #8 – Data is Pushed to the User

- Reports
- Best-practice KPI's
- Inbox items
- Dataspy – ability to personalize from a standard list of pre-defined items
- Export to Excel
- Historical data on the Asset screen
- Mobile handheld devices



The screenshot displays the Infor EAM Business Edition Asset screen for Asset 100000. The screen is divided into several sections for detailed asset information.

Asset Details:

- Asset: 100000
- Class: BOILER
- Category: 1
- Cost Code: 100-1000
- Criticality: (Affects output mmm)
- Safety: ☐
- Out of Service: ☐
- Manufacturer: CLEVER-BROOKS
- Serial Number: 1243432
- Part Association:
- Part:
- Store:

Equipment Details:

- Equipment:
- Department: PAC1
- Type:
- Organization:
- Status: Detailed

Equipment Details:

- Commission Date: 01/04/2008
- Equipment Value: 125,000.00
- Assigned To: CPMTH
- Transfer Date:
- Withdrawal Date:
- Purchase Order:
- Used:
- Sold/Scrap Date:

Tracking Details:

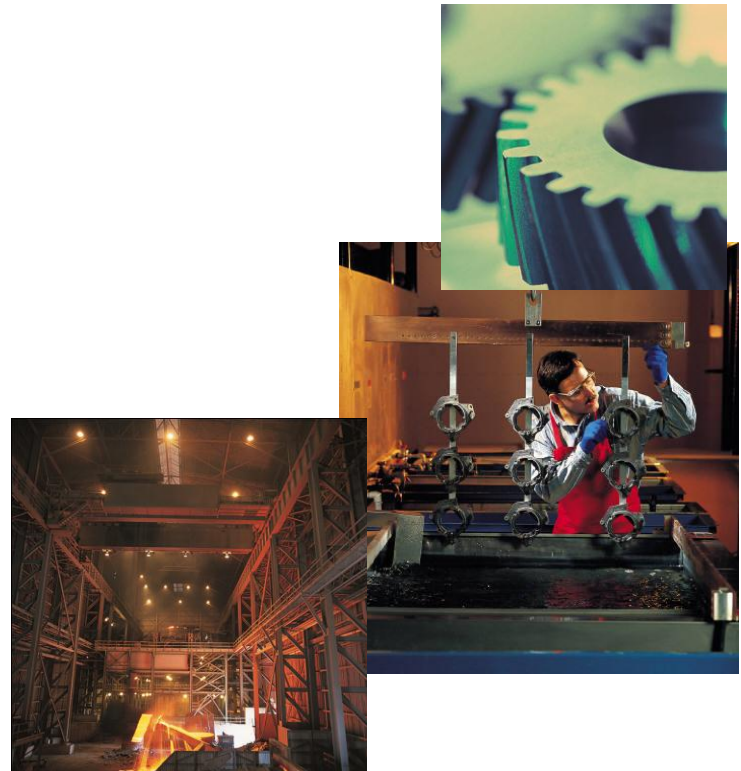
- Manufacturer: CLEVER-BROOKS
- Model: 13-PC-3
- Size: 300000
- Unit Size: 25
- Unit:
- Outside: 120x120
- Dimensions:

Custom Fields:

- Part:
- Location:
- Position:
- Dependent:
- Cost Roll up:
- Cost Roll up:
- Location:

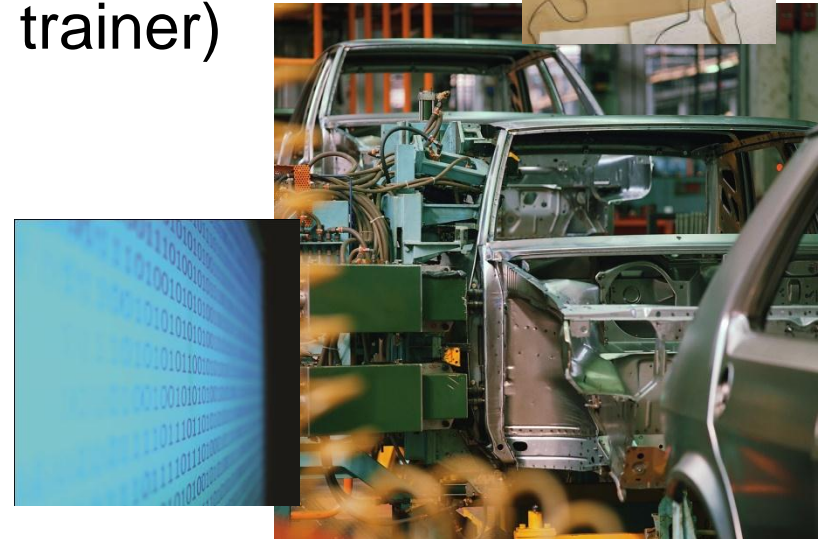
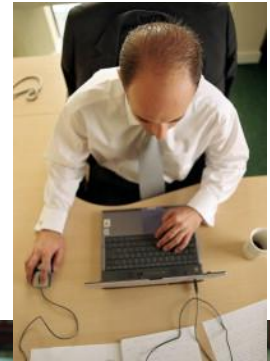
## Reason #9 – Grows With You

- Inspections
- Calibrations
- Repairable Spares
- Permits
- Multi-language
- Call Center
- Billing external customers
- GIS integration
- 21CFR11 compliance
- Advanced report writing



## Reason #10 – Low Cost of Ownership

- Simplified installation
- Ease of implementation
  - As little as 2-3 week deployments
  - Pre-set configuration
- Low database and server costs
- Training is minimized (train the trainer)



# Application Demonstration

## ■ Infor EAM Business Edition Demo

- Login and Navigation
- Legacy Application Migrated Data
- Functionality
  - Equipment
  - Work Orders
  - Inventory
- KPI's and Inbox
- Dataspies
- Screen Designer
- Security Setup
  - Requestor User Group

# What makes Infor EAM BE Special

- Proven record of success with wide market acceptance
- Technologically advanced
- Data migration
- More robust functionality
- Ease of use
- Configurability
- Easy setup and implementation
- Data is pushed out to the user
- Has potential to grow with you
- Infor EAM Business Edition's easy implementation and cost reduces total cost of ownership



# Questions?

